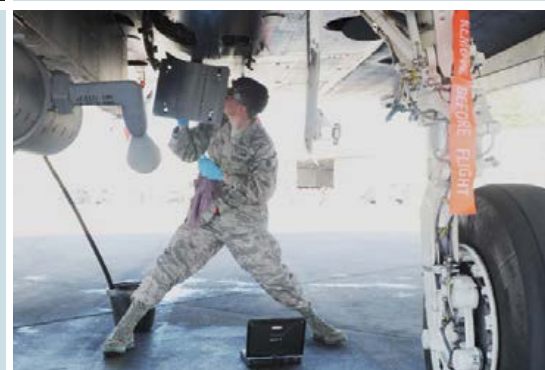


# CALIFORNIA

DROP FORGE



## California Drop Forge Overview

## ABOUT CALIFORNIA DROP FORGE

---

*Founded in 1901*

*72,000 sq-ft facility located in  
Los Angeles, California*

*One of the most experienced drop forge  
facilities in the United States*

*California Drop Forge (CDF) produces closed-die forgings and machined components for aerospace, defense, power generation, marine and medical industry applications.*

*CDF is a leader in manufacturing precision forgings from titanium, nickel base, stainless steels, aluminum and other exotic metal alloys, ranging from 2 lbs to 1,000 lbs.*

OVER  
**100**  
YEARS  
OF  
SUPERIOR  
PERFORMANCE



## CAPABILITIES



### ENGINEERING

- CDF's engineering team utilizes the latest CATIA and AutoCAD software for forging and tooling designs.
- Expert metallurgists use deformation / simulation software to calibrate and predict how various metals will react during forging operations, enabling the team to predict grain-flow, determine metal strain rates, and calculate metal temperature at the forge finishing stage.



### MANUFACTURING

- CDF operates two forge presses and six steam hammers, ranging in size and mass from 2,500 lbs up to 35,000 lbs.
- Complete in-house tool manufacturing
- Magnetic particle, fluorescent die penetrant, and layout inspection stations
- State-of-the-art CNC machining

**CDF IS CAPABLE OF PRODUCING PARTS UP TO 62" LONG BY 33" WIDE BY 12" THICK, DEPENDING ON MATERIAL TYPE AND CONFIGURATION.**



## PRODUCTS

### FORGED PRODUCTS:

**CALIFORNIA DROP FORGE PRODUCES A WIDE VARIETY OF PARTS FOR MILITARY AND COMMERCIAL APPLICATIONS WITHIN THE AEROSPACE AND MEDICAL INDUSTRIES, INCLUDING:**

- Aircraft Structural Parts
- Auxiliary Power Unit Components
- Compressor Wheels
- Discs
- Engine Mounts
- Hubs
- Impellers
- Jet Engines
- Land-Based Turbines
- Landing Gear Components
- Pump Housing
- Rotary Engine Parts
- Waspaloy Seals

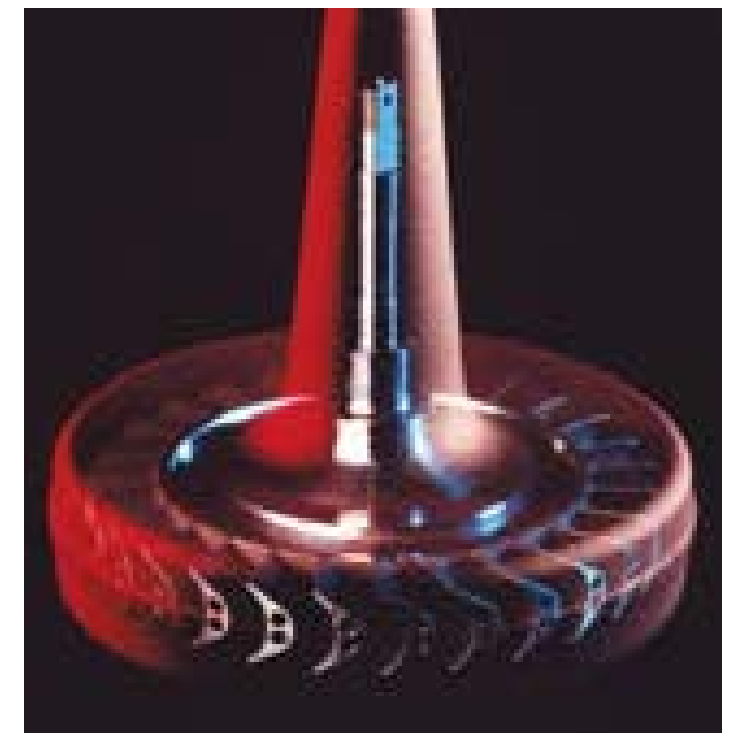


### MATERIALS FORGED:

- Titanium
- Nickel Based Alloys
- Stainless Steels
- Low Alloys Steel
- Aluminum
- Various Other Exotic and Customer-Specific Alloys

### POST FORGING OPERATIONS:

- Heat Treatment
- Non-Destructive Testing, Magnetic Particle and Liquid Penetrant
- Metallurgical Testing
- Rough and Finished Machining



## QUALITY ASSURANCE & CUSTOMER SERVICE

California Drop Forge maintains the highest level of quality manufacturing possible, utilizing manufacturing review efforts such as Lean Six Sigma and internal audits. CDF has earned AS9100 and ISO 9001: 2000, as well as NADCAP certifications; and our calibration system conforms to ANSI-NCSL Z540-1.

Whatever the need, whether forged or machined components ready for assembly, CDF is committed to on time delivery and outstanding customer service.



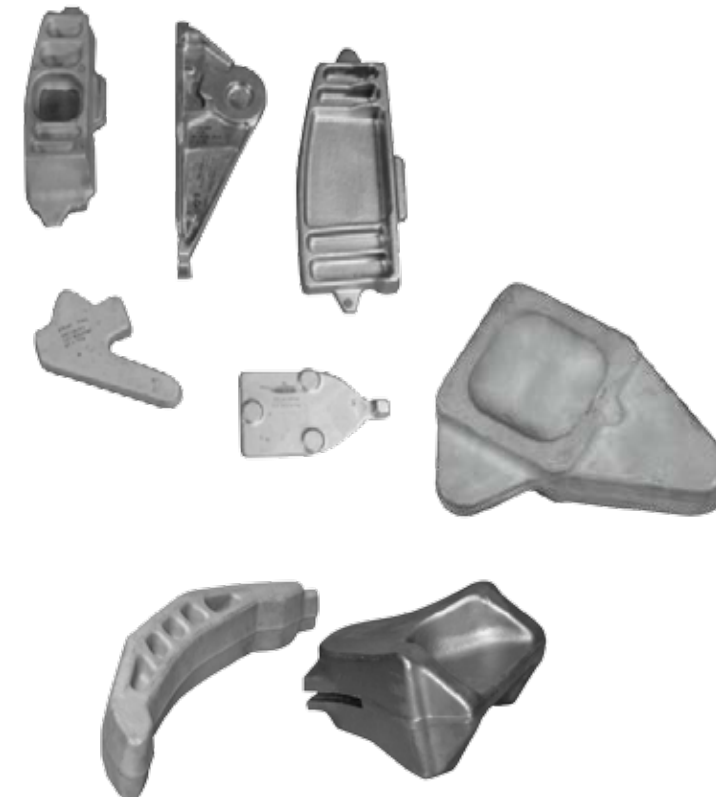
## FORGING EQUIPMENT

### STEAM-POWERED HAMMERS:

- 6 Hammers up to 35,000 lbs

### PRESSES:

- 2000 ton Clearing Hydraulic
- 40 ton Minister Mechanicals
- 700 ton Toledo and Maxi
- Aluminum Rotary Furnace
- Gas Slot Furnaces



HBD Industries Inc. and its subsidiaries cannot accept responsibility for possible errors in catalogues, brochures, other printed materials, and website information, and may change, delete, add to or otherwise modify such information without notice. HBD reserves the right to alter its products without notice, including products already on order, provided that such alteration can be made without changes being necessary in specifications already agreed to. All trademarks in this material are the property of the HBD Industries Inc., or its subsidiaries. The HBD and HBD brands logotype, are trademarks of HBD Industries Inc. All rights reserved.

DISTRIBUTED BY:

CALIFORNIA DROP FORGE, INC.  
1033 ALHAMBRA AVENUE  
LOS ANGELES, CA 90012 - USA  
TEL: (323) 221.1134  
sales@californiadrop.com  
www.californiadrop.com